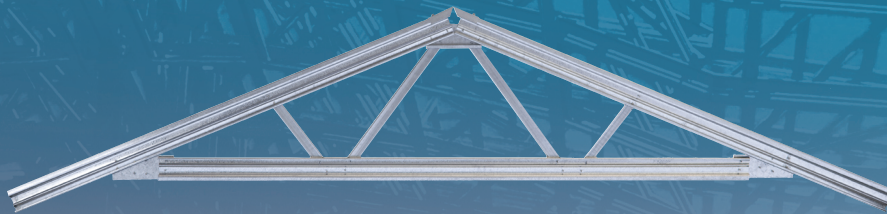


# CREATING THE ADVANTAGE IN LIGHT GAUGE STEEL



**Is your roof too large to be done with pre-fabricated timber roof trusses?  
Do you want to supply low cost roofs or simply prefer non-combustible roof structures?  
Whatever your needs, MiTek's Ultra-Span has got you covered.**

Ultra-Span is a light gauge steel roof truss system that is both lightweight and compact for easy handling and economical transportation. Engineered designs are calculated using MiTek's state of the art, in-house developed 20/20 software and provides economical roofing solutions.

The low mass per m<sup>2</sup> of this roofing system ensures both savings on the supporting structure as well as on transportation and erection costs whilst also being vermin proof and non-combustible.

#### **Advantages of the Ultra-Span light gauge steel truss system:**

- Elegant simple system, with all members straight and true for a level roof.
- Span capability from small low-cost to large 40m clear span commercial structures.
- Ultra-Span trusses can be supplied in "kit-form" (low-cost housing or other remote projects).
- Longevity of product due to galvanized coating plus inherent properties of non-combustibility, resistance to borer and fungus attack.
- Lower weight reduces transportation costs & improves handling and erection.
- Ease of truss manufacture with screws and electric fixing tool directly on site or in factory conditions.

Midrand (Head Office) Tel: +27 (0) 11 237 8700 / MiTek Park, 754 16th Road, Randjespark, Ext. 34, Halfway House, 1685.  
Cape Town Tel: 021 905 0244 • Durban Tel: 031 700 6332 • Port Elizabeth Tel: 041 360 2214  
Email: [marketing@mittek.co.za](mailto:marketing@mittek.co.za) • Website: [www.mitek.co.za](http://www.mitek.co.za)

 @miteksa

 @miteksa

 MiTek Industries South Africa

 MiTek Industries South Africa

# MiTek®

## ULTRA-SPAN®

  
SASFA  
SOUTHERN AFRICAN  
LIGHT STEEL FRAME BUILDING ASSOCIATION



**CREATING THE ADVANTAGE**

\*MiTek Industries South Africa (Pty) Ltd, a Berkshire Hathaway Company